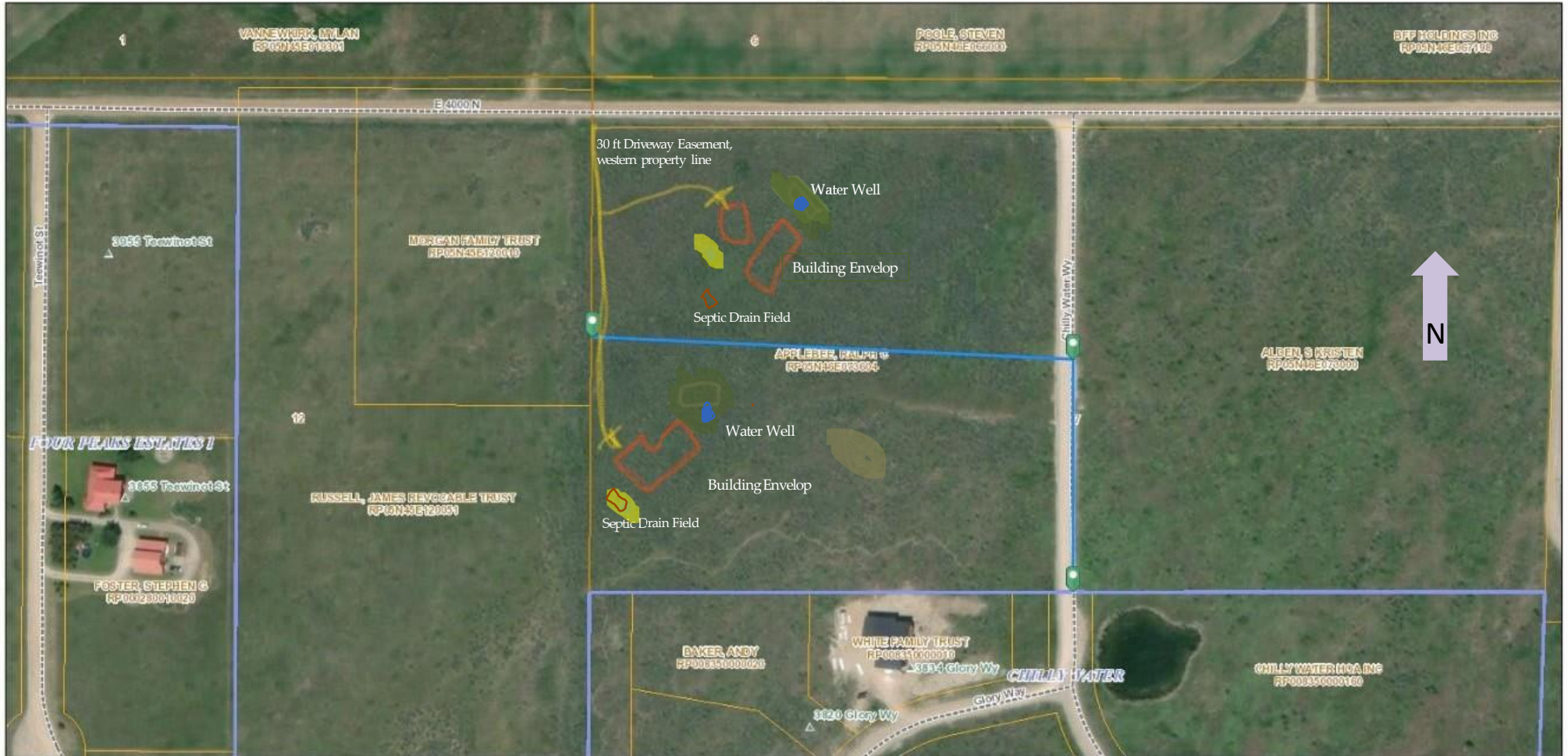


Teton County, Idaho



7/7/2019, 2:13:47 PM

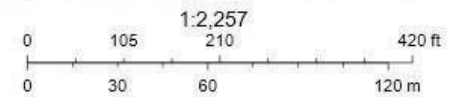
Conceptual Master Plat: Applebee Subdivision, 2 ~5 acre lots

NW ¼ of Section 7, T 5N, R46E

Scale 1 inch : 140 feet

July 12, 2019

Prepared by: Lisa Applebee, P.E.



Teton County Idaho GIS. Source: Esri, DigitalGlobe, GeoEye, Earthstar Geographics, CNES/Airbus DS, USDA, USGS, AeroGRID, IGN, and the GIS User Community, Teton Regional Land Trust, Teton County, ID GIS, GIS, Teton County GIS